

NOTICE TO MARINERS

DUDGEON OFFSHORE WIND FARM CONSTRUCTION WORKS

NOTICE IS HEREBY GIVEN that construction activities are in progress at the Dudgeon Offshore Wind Farm and Export Cable Corridor.

Foundation Installation

The OLEG STRASHNOV Heavy Lift Vessel, operated by Seaway Heavy Lifting, will install the 67 Wind Turbine Generator foundations and the substation topside in the wind farm area. The OLEG STRASHNOV will be supported by anchor handling tugs. This operation is on-going and expected to be completed by end-August 2016.

The Seven Viking will perform seabed intervention at the Offshore Substation Jacket foundation location. This work is on-going and planned to be completed by 26.06.2016.

Cable Installation

The NDEAVOR cable laying vessel, operated by VBMS, will install inter-array cables to connect wind turbines to the offshore substation. This operation is expected to start late June 2016 and to be completed by mid-September 2016.

The Grand Canyon will be performing burial of the Inter Array Cables. This operation is expected to start early August 2016

The vessel Rollingstone will perform rock installation for scour protection around the Substation location. This operation is expected to be performed late July 2016.

RV Discovery will perform post survey of the 2 export cables from landfall to the OSS location. This work is planned to be performed from mid until late July, 2016.

Topaz Installer will perform export cable repair. This work is planned to be performed early until late July, 2016, at the cable splice location.

Guard vessel

The Adventure will act as a guard vessel to safe guard the wind farm area. During port calls, Advance will be her back-up. Adventure will be on location from end April expected to be completed late October.

The export cable shall be spliced and the Rachael S will act as guard vessel at the cable jointing location from mid April 2016.

GENERAL

MARINERS ARE HEREBY INFORMED that a statutory construction Safety Zone (exclusion zone) is in place at the wind farm site. This safety zone is defined by:

A 500 metres radius around each wind turbine, offshore sub-station and their foundations whilst work is being performed as indicated by the presence of construction vessels; and

A 50 metres radius around each wind turbine, the offshore sub-station platform and associated foundation structures installed, complete or incomplete but waiting to be commissioned as part of the Dudgeon offshore wind farm where personnel are present on, or are being landed on or being taken from, the structures.

All vessels will exhibit appropriate lights and shapes prescribed by the International Regulations for Preventing Collisions at Sea.

ALL VESSELS ARE REQUESTED to give all construction and support vessels a wide berth.

MARINERS ARE ADVISED to navigate with caution and keep continued watch on VHF Ch. 16 when navigating the area.

A further notice to mariners will be issued when these works are completed, expected autumn 2016.

**Please direct any enquiries regarding this notice to:
Statoil Wind Control Centre - statoilwindcontrol@statoil.com**

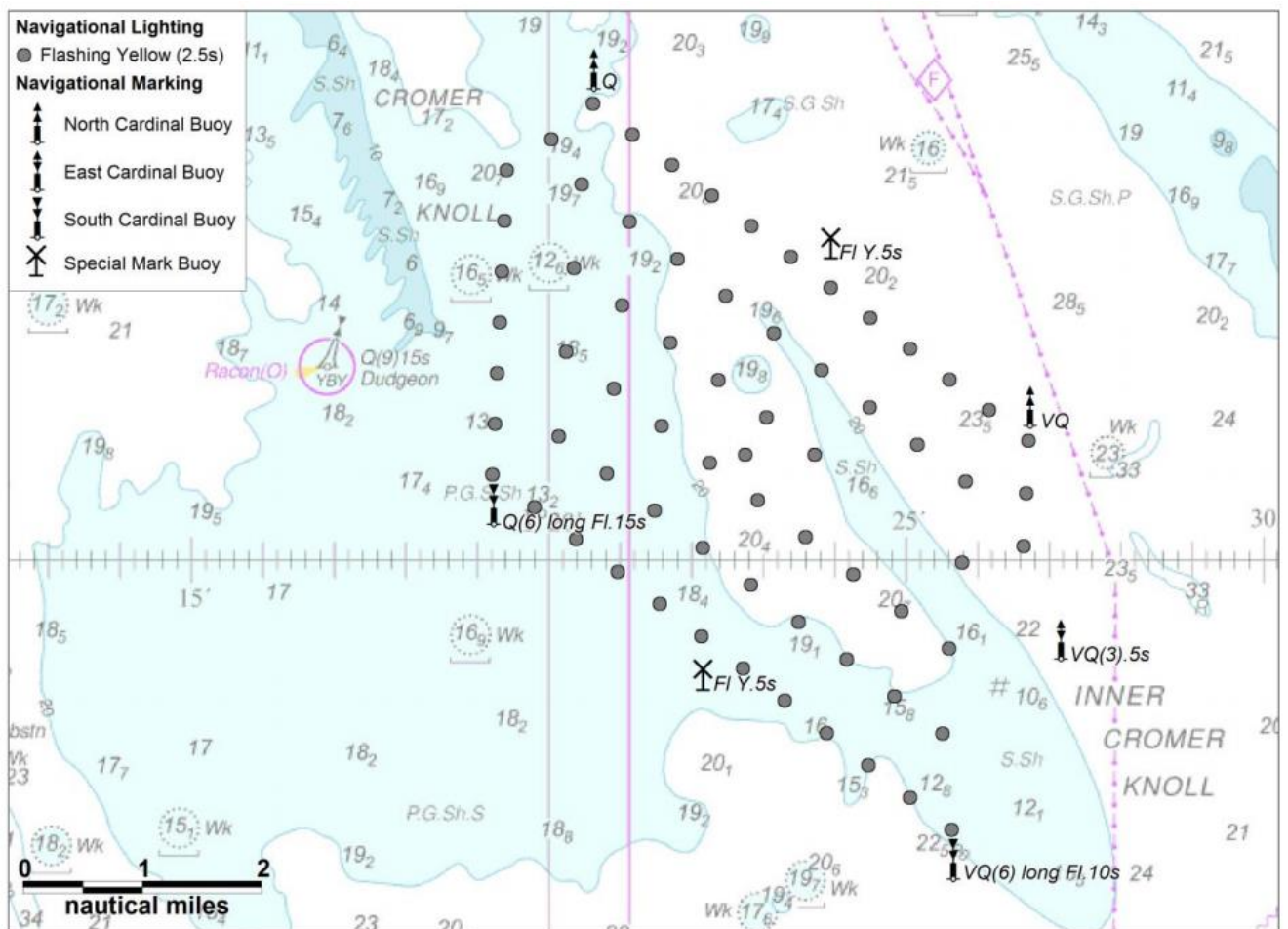
A copy of this notice can also be found at:

<http://dudgeonoffshorewind.co.uk/news/notice-to-mariners>

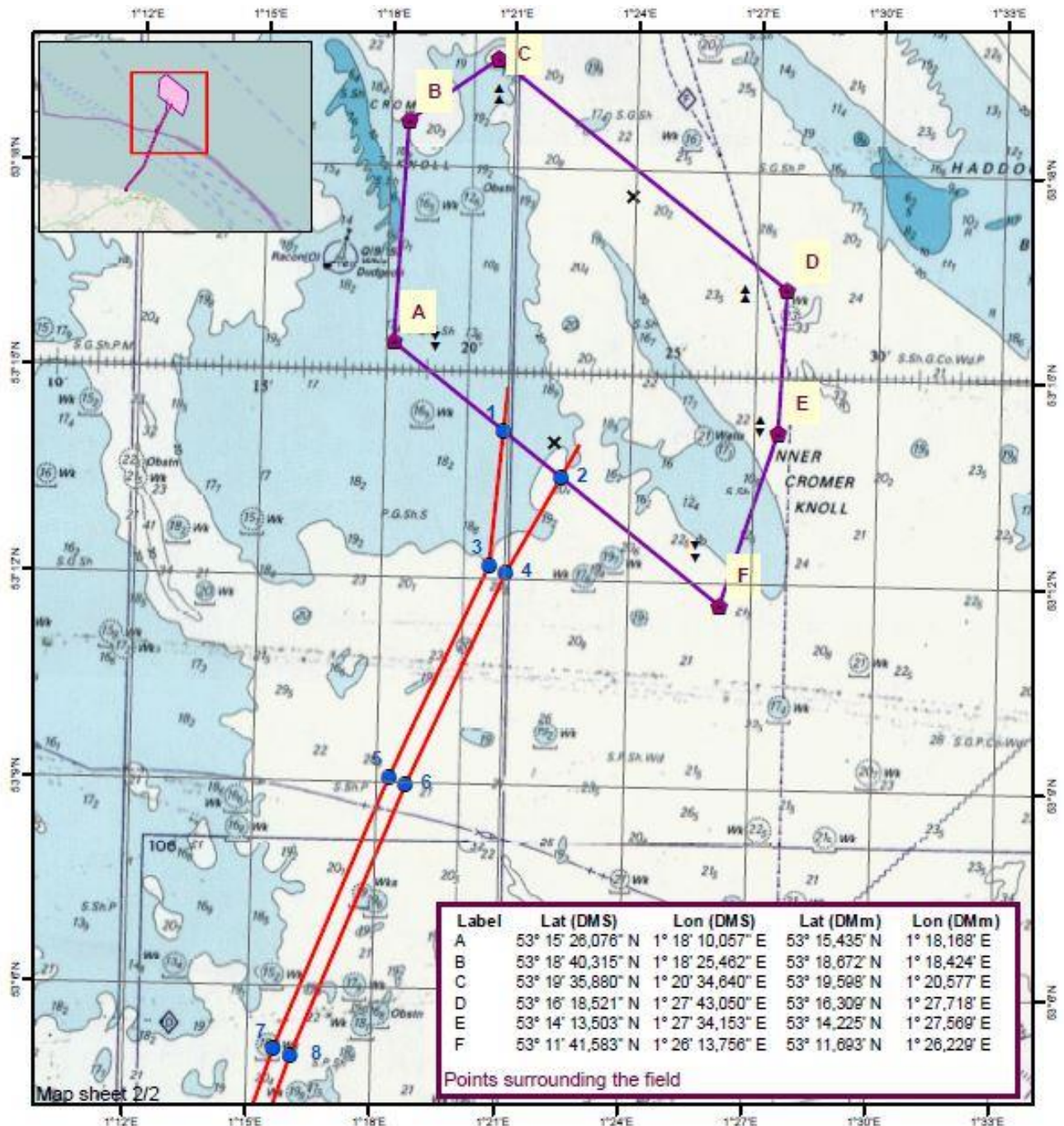
SITE DETAILS

Position of Navigation Buoys demarcating the Dudgeon Offshore Wind Farm site

Mark	Location	Name	Latitude	Longitude	Status	Flash Character	Code	Range
North Cardinal	NW Cardinal	N-DOW	53° 19,102' N	1° 20,592' E	Temporary	Q	601	5nm
Special Mark	Special Mark North	DOW - SM - N	53° 17,631' N	1° 23,919' E	Temporary	Fl.Y.5s	328	5nm
North Cardinal	North East Cardinal	NE - DOW	53° 16,277' N	1° 26,691' E	Temporary	VQ	501	5nm
East Cardinal	East Cardinal	E- DOW	53° 14,320' N	1° 27,123' E	Temporary	VQ(3).5s	508	5nm
South Cardinal	SE Cardinal	S - DUDGEON	53° 12,470' N	1° 25,617' E	Permanent	VQ(6) long Fl.10s	516	5nm
Special Mark	Special Mark South	DOW - SM - S	53° 14,012' N	1° 22,132' E	Temporary	Fl.Y.5s	328	5nm
South Cardinal	SW Cardinal	SW - DOW	53° 15,451' N	1° 19,188' E	Temporary	Q(6) long Fl.15s	631	5nm

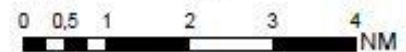


Wind farm area and cable corridor north








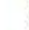



Label	Lat (DMS)	Lon (DMS)	Lat (DMm)	Lon (DMm)
1	53° 14' 10,494" N	1° 20' 53,200" E	53° 14,175' N	1° 20,887' E
2	53° 13' 30,784" N	1° 22' 18,795" E	53° 13,513' N	1° 22,313' E
3	53° 12' 12,063" N	1° 20' 36,508" E	53° 12,201' N	1° 20,608' E
4	53° 12' 5,472" N	1° 21' 1,112" E	53° 12,091' N	1° 21,019' E
5	53° 9' 4,426" N	1° 18' 17,288" E	53° 9,074' N	1° 18,288' E
6	53° 8' 58,127" N	1° 18' 42,081" E	53° 8,969' N	1° 18,701' E
7	53° 5' 4,975" N	1° 15' 38,228" E	53° 5,083' N	1° 15,637' E
8	53° 4' 59,401" N	1° 16' 3,461" E	53° 4,990' N	1° 16,058' E

Points along export cable corridor

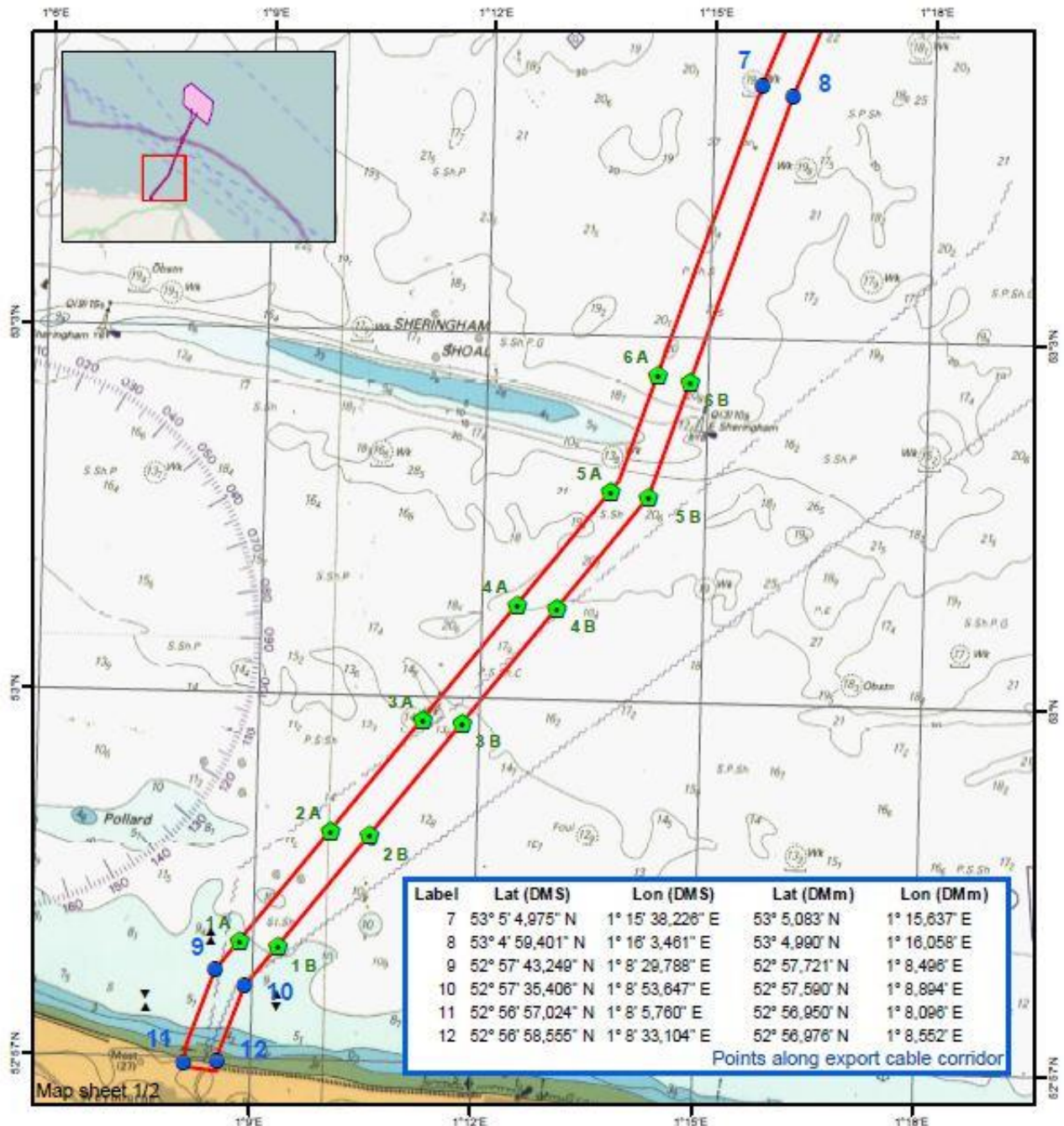


Legend

-  Fields Boundary Corner points
-  Field Boundary added 1000m
-  Survey Area - Export Cable, points
-  Survey Area - Export Cable
-  East Cardinal
-  North Cardinal
-  South Cardinal
-  Special Mark
-  West Cardinal



Cable corridor south and export cable landfall









Label	Lat (DMS)	Lon (DMS)	Lat (DMm)	Lon (DMm)
1 A	52° 57' 57,894" N	1° 8' 48,791" E	52° 57,965' N	1° 8,813' E
1 B	52° 57' 55,481" N	1° 9' 19,702" E	52° 57,925' N	1° 9,328' E
2 A	52° 58' 53,227" N	1° 10' 0,633" E	52° 58,887' N	1° 10,011' E
2 B	52° 58' 51,451" N	1° 10' 32,388" E	52° 58,858' N	1° 10,540' E
3 A	52° 59' 49,079" N	1° 11' 13,218" E	52° 59,818' N	1° 11,220' E
3 B	52° 59' 47,880" N	1° 11' 45,752" E	52° 59,798' N	1° 11,763' E
4 A	53° 0' 46,724" N	1° 12' 28,201" E	53° 0,779' N	1° 12,470' E
4 B	53° 0' 45,434" N	1° 13' 0,623" E	53° 0,757' N	1° 13,010' E
5 A	53° 1' 43,601" N	1° 13' 42,256" E	53° 1,727' N	1° 13,704' E
5 B	53° 1' 41,112" N	1° 14' 13,136" E	53° 1,685' N	1° 14,219' E
6 A	53° 2' 41,270" N	1° 14' 18,352" E	53° 2,888' N	1° 14,306' E
6 B	53° 2' 38,543" N	1° 14' 45,145" E	53° 2,842' N	1° 14,752' E

Points marking 1NM intervals from shore



Legend

-  1 NM Interval from shore
-  Survey Area - Export Cable, points
-  Survey Area - Export Cable
-  East Cardinal
-  North Cardinal
-  West Cardinal

GUARD VESSEL LOCATION

Cable splicing location is defined by the cable end and clump weights at the following locations:

Cable End: 381789 E, 5877403 N / 53° 01.984' N, 001° 14.229' E
Clump Weight: 381808 E, 5877449 N / 53° 02.009' N, 001° 14.244' E

Holdback anchor / Marker buoy for initiation clump weight
Clump Weight: 381582 E, 5877163 N / 53° 01.853' N, 001° 14.048' E
Cable End: 381621 E, 5877206 N / 53° 01.876' N, 001° 14.082' E

KEY CONSTRUCTION VESSEL CONTACT DETAILS

Oleg Strashnov



Callsign: 5BNL2

Bridge phone : +31 88 732 92 31/32

Immarsat F77 +870 765 050 118

Email oleg-strashnov@shl.com.cy

Ndeavour



Callsign: 5BVG3

Bridge phone : +87 0773 187 969 / Vsat. +31 10 713 05 28

E-mail: NDEAVOR-captain@boskalis.com

Grand Canyon



Callsign: 3EVR8
Bridge phone: TBA
E-mail : TBA

Rollingstone



Callsign: PHYR
Bridge phone: +31 (0) 20 70 83 572
E-mail : Captain.Rollingstone@rollingstone.tideway-deme.nl ,
Bridge.Rollingstone@rollingstone.tideway-deme.nl

Adventure



Callsign: 2IFE4
Bridge Phone: TBA
E-mail : adventureGS@gmail.com

Rachael S



Callsign: 2FSB
Bridge Phone: GSM, mob 07880581433, SAT.TEL: 0088 1622469422
E-mail : rachaelsgy305@e-catch.co.uk

Advance WY77



Callsign: MZNA6

Bridge Phone: Sat. Phone: 00870773231090/01947 240024

E-mail : adventureGS@gmail.com

Seven Viking



Callsign: LCPX

Bridge Phone: +47 23 67 43 85 / +47 958 37 306

E-mail : Sviking@statoil.com

RV Discovery



Callsign: 2AEL8

Bridge Phone: GSM +44-7876-454-806 / Sat. +870-764-836 974

E-mail : FEMU.rvdiscovery@fugro.com

Topaz Installer



Callsign: J8B2641

Bridge Phone: TBA

E-mail : TBA